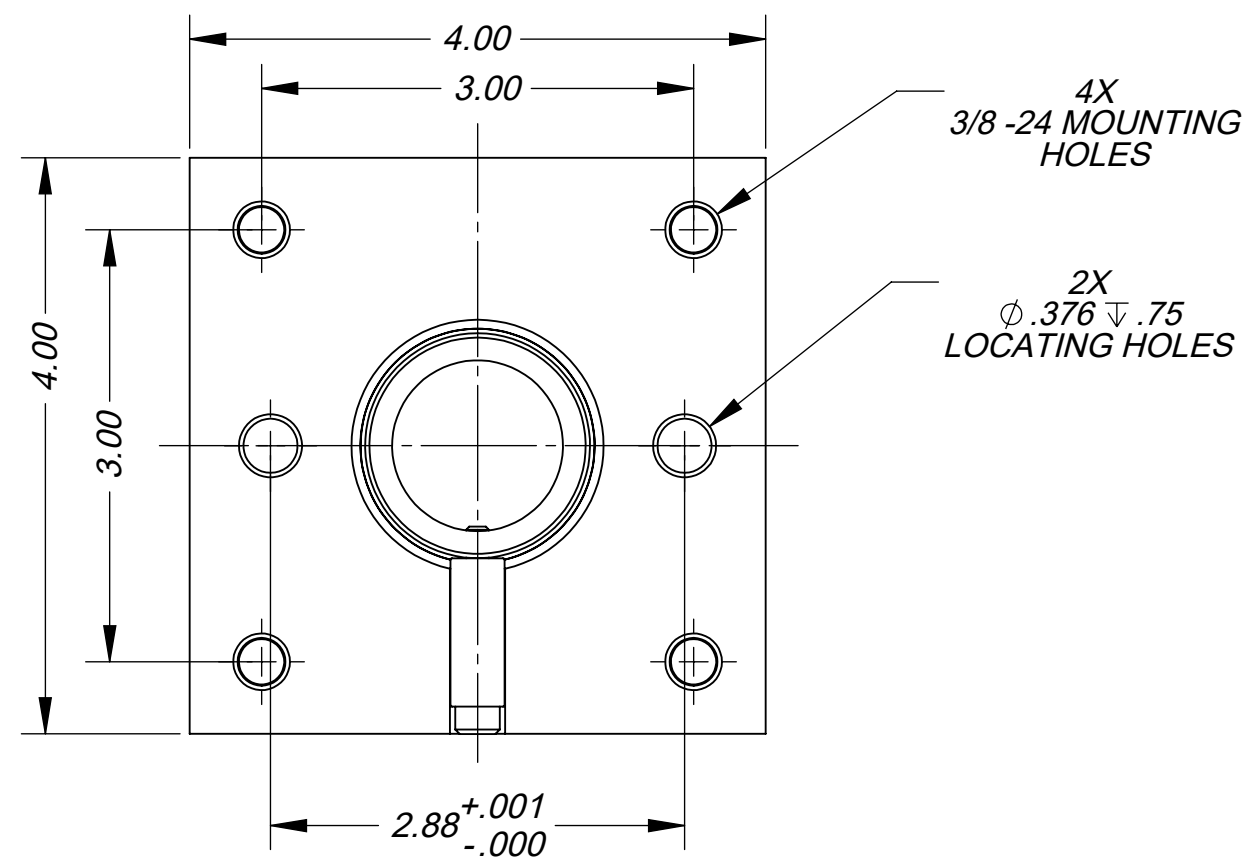
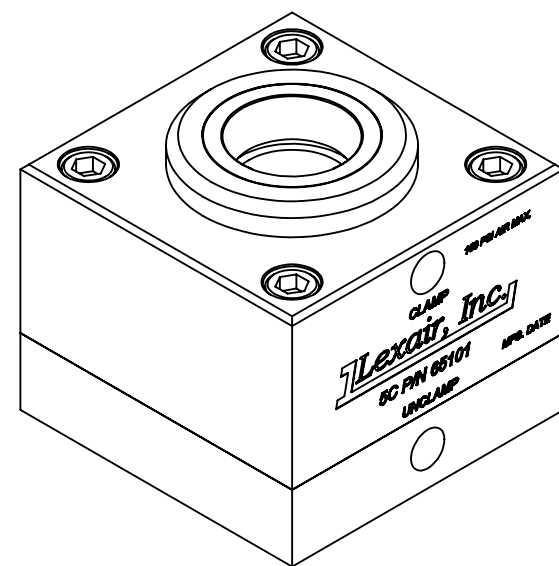
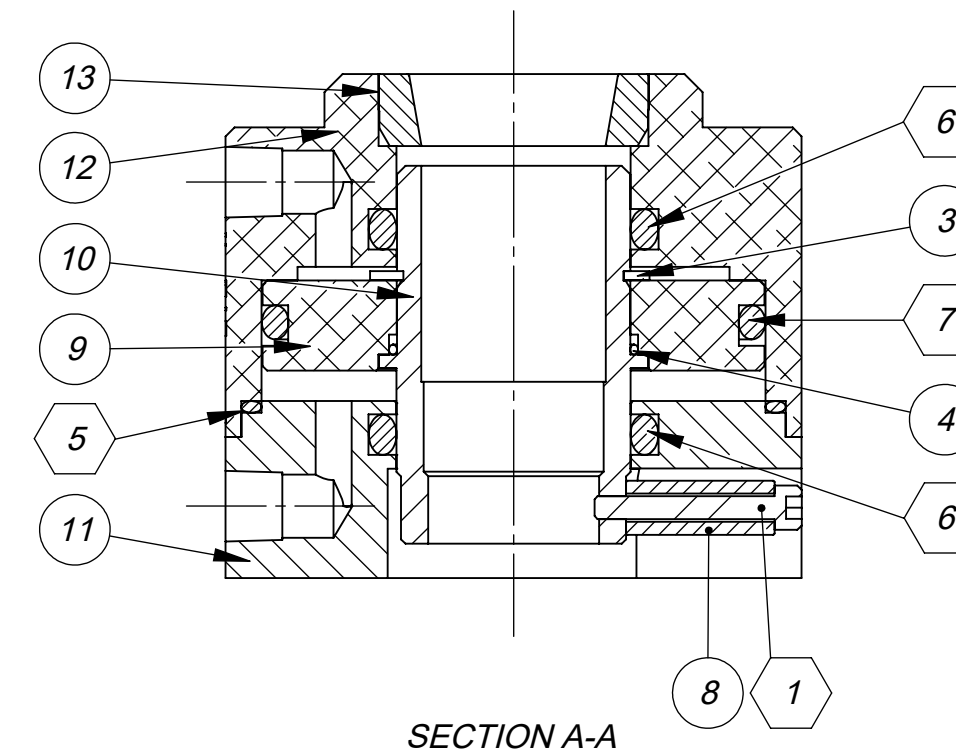
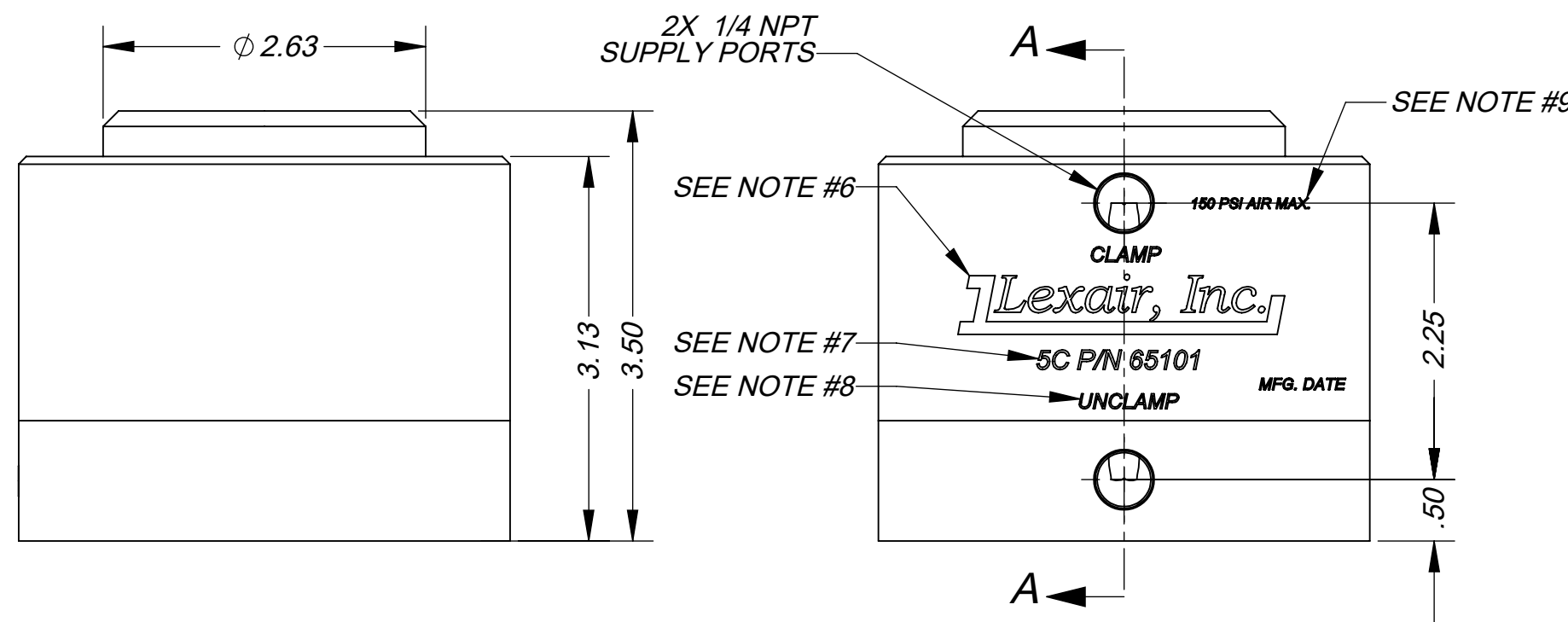
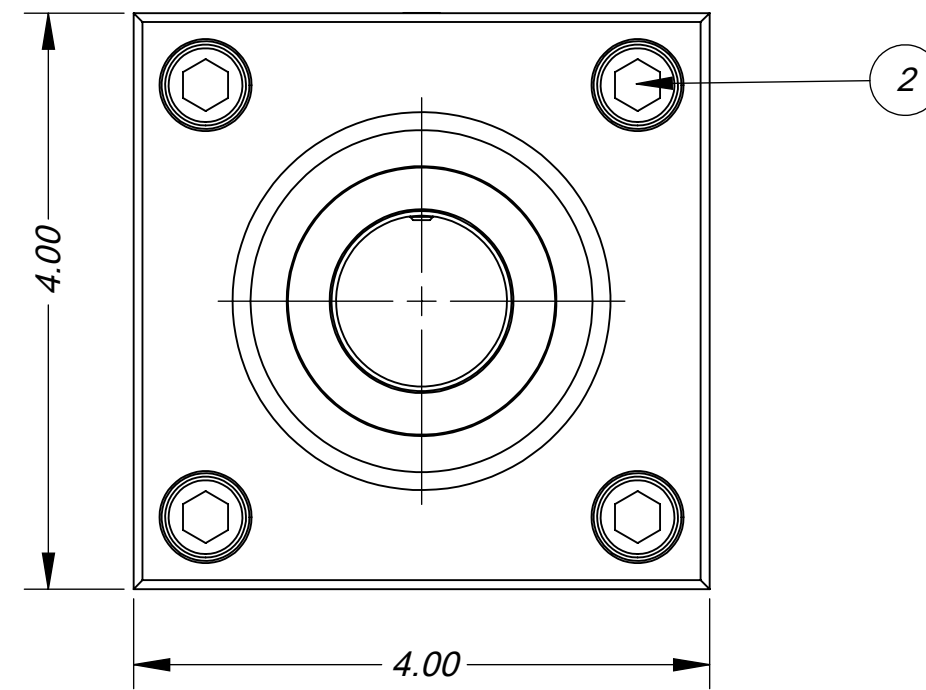


**C65101**

ITEM NO.	PART NUMBER	DESCRIPTION	QTY.
1	01-0058	SCREW, SHC, #10-32 X 1.25, BRASS	1
2	01-2035-11	SCREW, SHC, 3/8-24 X 2.25, BLOX	4
3	01-2053	RING, RETAINING, N5100-162, STEEL	1
4	04-01-030	O-RING, BUNA 70, #030	1
5	04-01-153	ORING, BUNA 70, #153	1
6	04-01-326	O-RING, BUNA, #326	2
7	04-01-338	O-RING, BUNA, #338	1
8	65-0003	GUIDE	1
9	65-0004	PISTON	1
10	65-0005	GUIDE, PISTON	1
11	65-0278L	BASE, 5C, 65101, LEXAIR	1
12	65-0277L	BODY, RED, 5C	1
13	65-0008	BUSHING, COLLET NOSE	1



- NOTES:**
- MAX PRESSURE 150 PSI AIR.
  - APPROXIMATE RADIAL GRIP FORCE = 20.39 X PRESSURE.
  - ITEMS IN HEX BALLOONS ARE INCLUDED IN THE STD. REPAIR KIT 65-0013.
  - PRESS BUSHING INTO BODY BEFORE LASER ENGRAVING.
  - LASER ENGRAVE LEGENDS IN POSITION AS SHOWN. MUST BE DONE BEFORE BASE IS ATTACHED.
  - LEXAIR LOGO TO BE .50 HIGH. LEXAIR LOGO AVAILABLE IN ELECTRONIC FORMAT FROM LEXAIR.
  - 5C P/N 65101 TO BE .156 HIGH IN ARIAL ITALIC.
  - CLAMP / UNCLAMP TO BE .125 HIGH IN ARIAL ITALIC.
  - MFG. DATE AND 150PSI AIR MAX. TO BE .094 HIGH IN ARIAL ITALIC.

THIS DOCUMENT AND ITS CONTENTS ARE THE PROPERTY OF LEXAIR, INC. THEY ARE FURNISHED TO YOU ON THE FOLLOWING CONDITIONS: NO RIGHT OR LICENSE IN RESPECT OF THIS DOCUMENT OR ITS CONTENTS, IS GIVEN OR WANTED IN SUPPLYING THIS DOCUMENT TO YOU. THIS DOCUMENT OR ITS CONTENTS ARE NOT TO BE USED OR TREATED IN ANY MANNER INCONSISTENT WITH THE RIGHTS OF LEXAIR, INC. OR TO ITS DETRIMENT AND ARE NOT TO BE COPIED, REPRODUCED, OR DISCLOSED OF, EXCEPT WITH ITS PRIOR WRITTEN CONSENT.

**REVISIONS**

ECL: 21004 01-21-21 AJP  
**B** ADDED LASER ENGRAVE  
 STEP AND UPDATED B.O.M.

ECL: 05075 06-16-05 MBR

<b>Tolerances Unless Otherwise Specified:</b>		MATERIAL SPEC.	PC. NO.: 65101	
TYPE	FINISHED AS CAST		MADE FROM:	
DEC .00	± .015" ± .030"	PROCESS SPEC. SEE NOTES	MODEL FILE: 65101.SLDASM	
DEC .000	± .005" ± .010"		CAD FILE: 65101.slddrw	
FRACTIONAL	± 1/64" ± 1/32"		<b>5C PNEUMATIC COLLET CLOSER C65101</b>	
ANGLES *	± 1/2" ± 1"		SHEET NO. 1 of 1 SHEETS	
FINISH 175 µ in.		APPROX. WT. 4.876 LBS		
<b>Lexair, Inc.</b>		DRAWN MBR	CHECKED TPO	
2025 Mercer RD, Lexington, Kentucky 40511		06-16-05	06-16-05	